

# BUSTER+PUNCH

LONDON

[ product. ]

## ELECTRICITY / 1G TOGGLE SWITCH

[ motion. **ON/OFF.** ]

[ look. **CROSS.** ]

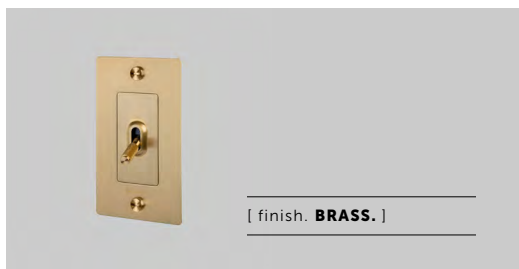
[ detail. **COIN SCREW.** ]

[ born. **LONDON.** ]

[ region. **NORTH AMERICA.** ]

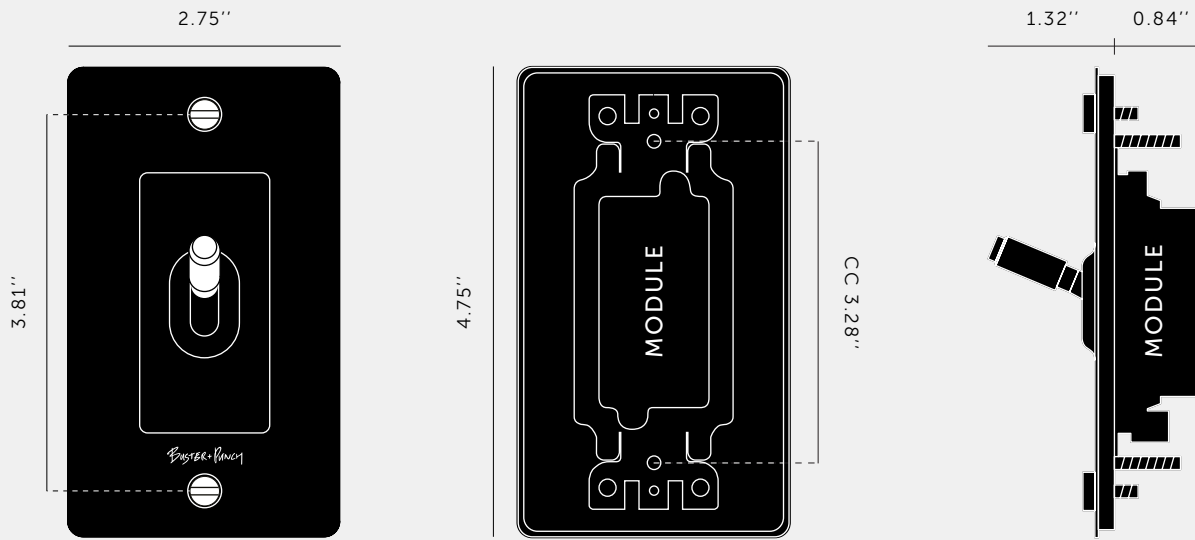
A solid metal toggle switch with a diamond-cut knurled knob to feel amazing with every touch. The switch is finished with a flat plate and our signature solid metal coin screws.

Available in five different finishes. You can also team them up with our dimmers, duplex and USB outlets in matching finishes.



[ gang. **1G.** ]

[ info. **MEASUREMENTS.** ]



[ info. **SPECIFICATIONS.** ]

Our Metal Electricity range has solid stainless steel plates, in our signature white, steel, brass, smoked bronze and black finishes.

**FYI: THIS PIECE HAS A 1/8 INCH SHADOW GAP WHEN INSTALLED.**

Module: NTM-01384 (US-TO-MO-A)

Style: ON/OFF Toggle switch

120-277V AC / 15A / 60Hz

3-Way switching (can be controlled from 2 locations)

Certification: cETLus 5005703

[ info. **FINISH & SKU NUMBERS.** ]

[ finish. ]

[ US. ]

White	NTG-143085
Steel	NTG-07084
Brass	NTG-05081
Smoked Bronze	NTG-09083
Black	NTG-023083

[ info. **CARE INSTRUCTIONS.** ]

Wipe with damp cloth with no loose hairs, avoid using any chemicals. All finishes are prone to aging.

[ info. **CERTIFICATION.** ]

Plates: Underwriters Laboratories cULus listed for use throughout North America.

Toggle: Intertek cETLus listed number for use throughout North America.

[ please. **NOTE.** ]

**DISCLAIMER:** Always consult a trade professional when installing this toggle switch. Buster + Punch is not responsible for the usage or feasibility of installation requirements. This product is not suitable for damp or wet environments.

**FAQ SHEET**

CATEGORY	QUESTION	ANSWER
<b>GENERAL</b>	How do I clean my electricity collection?	A slightly damp microfiber cloth is best, never use any chemicals as this will damage the metal surface.
<b>TOGGLE</b>	Are your toggles 3-Way or 4-Way Multi-Way switching?	Our standard toggles are 3-Way switches which are suitable Multi-Way switching for 2 Locations. Our 4-Way switch will be coming soon.
<b>TOGGLE</b>	Are the toggles available as dimmers?	No, unfortunately they are not.
<b>TOGGLE</b>	Can we remove and replace the toggle on the plate?	Yes.
<b>TOGGLE</b>	Do you manufacture / stock spring loaded toggles?	No, unfortunately we don't.
<b>TOGGLE</b>	Can I mix a toggle switches with a dimmer?	This is not possible for the complete products, but custom sets are available where you can mix toggles, dimmers and sockets. Please contact <a href="mailto:sales@busterandpunch.us">sales@busterandpunch.us</a> to make an order.
<b>TOGGLE</b>	Can I have a 3-Way and a 4-Way on the same 2G plate for Multi-Way switching?	No, not until our 4-Way switch is available, but the system is modular so you can mix and match what toggles, dimmers and sockets you want on each wall plate.
<b>TOGGLE</b>	The spring action has gone in my toggle?	Please contact Buster + Punch for any faulty product. Please supply photos or videos.
<b>TOGGLE</b>	Are your toggle modules tested for use throughout North America?	Yes, our modules are certified for use throughout North America.  Module cETLus listed number: 5005703 Conforms to UL STD. 20" Certified to CSA STD. C22.2 NO. 111 All modules are marked with the listed number.  Plate cULus listed number: 507052.

# BUSTER+PUNCH

LONDON

[ product. ]

## ELECTRICITY / 2G TOGGLE SWITCH

[ motion. **ON/OFF.** ]

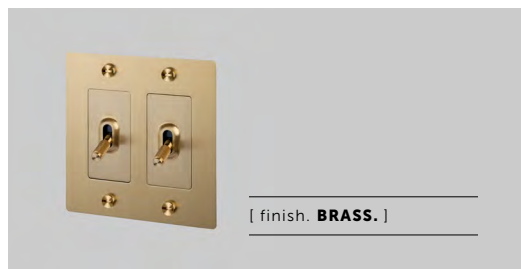
[ look. **CROSS.** ]

[ detail. **COIN SCREW.** ]

[ born. **LONDON.** ]

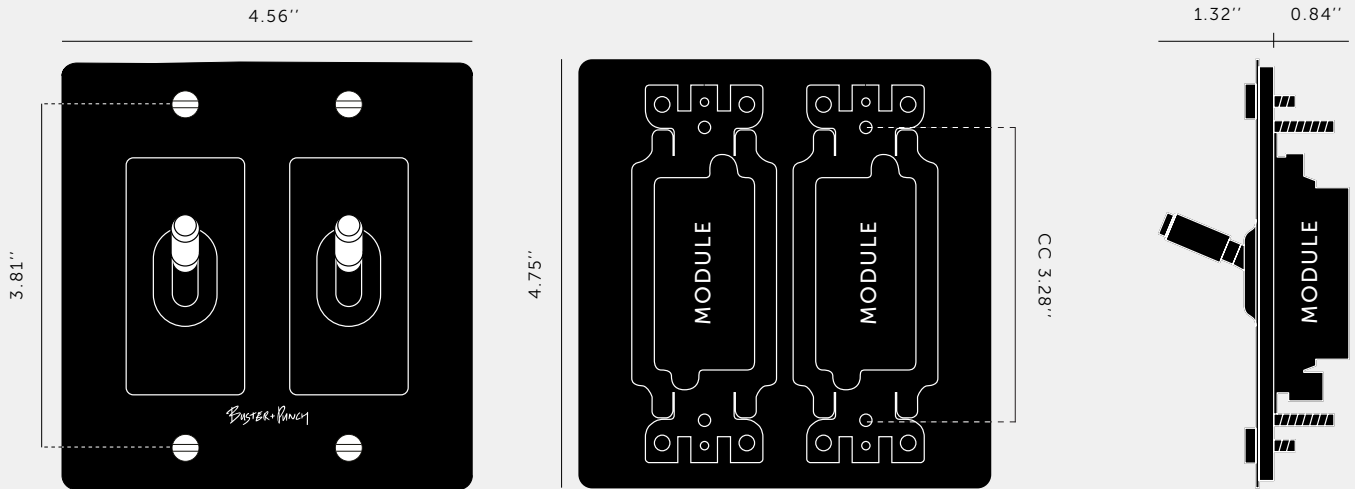
[ region. **NORTH AMERICA.** ]

A solid metal 2G toggle switch with a diamond-cut knurled knob to feel amazing with every touch. The switch is finished with a flat plate and our signature solid metal coin screws. Available in five different finishes. You can also team them up with our dimmers, duplex and USB outlets in matching finishes.



[ gang. **2G.** ]

[ info. **MEASUREMENTS.** ]



[ info. **SPECIFICATIONS.** ]

Our Metal Electricity range has solid stainless steel plates, in our signature white, steel, brass, smoked bronze and black finishes.

**FYI: THIS PIECE HAS A 1/8 INCH SHADOW GAP WHEN INSTALLED.**

Module: NTM-01384 (US-TO-MO-A) (2 per unit)  
Style: ON/OFF Toggle switch  
120-277V AC / 15A / 60Hz  
3-Way switching (can be controlled from 2 locations)  
Certification: cETLus 5005703

[ info. **FINISH & SKU NUMBERS.** ]

[ finish. ]	[ US. ]
White	NTG-143088
Steel	NTG-07089
Brass	NTG-05086
Smoked Bronze	NTG-09088
Black	NTG-023086

[ info. **CARE INSTRUCTIONS.** ]

Wipe with damp cloth with no loose hairs, avoid using any chemicals. All finishes are prone to aging.

[ info. **CERTIFICATION.** ]

Plates: Underwriters Laboratories cULus listed for use throughout North America.

Toggle: Intertek cETLus listed number for use throughout North America.

[ please. **NOTE.** ]

**DISCLAIMER:** Always consult a trade professional when installing this toggle switch. Buster + Punch is not responsible for the usage or feasibility of installation requirements. This product is not suitable for damp or wet environments.

# BUSTER+PUNCH

LONDON

[ product. ]

## ELECTRICITY / 3G TOGGLE SWITCH

[ motion. **ON/OFF.** ]

[ look. **CROSS.** ]

[ detail. **COIN SCREW.** ]

[ born. **LONDON.** ]

[ region. **NORTH AMERICA.** ]

A solid metal 3G toggle switch with a diamond-cut knurled knob to feel amazing with every touch. The switch is finished with a flat plate and our signature solid metal coin screws. Available in five different finishes. You can also team them up with our dimmers, duplex and USB outlets in matching finishes.



[ finish. **STEEL.** ]



[ finish. **BRASS.** ]



[ finish. **SMOKED BRONZE.** ]



[ finish. **BLACK.** ]



[ finish. **WHITE.** ]

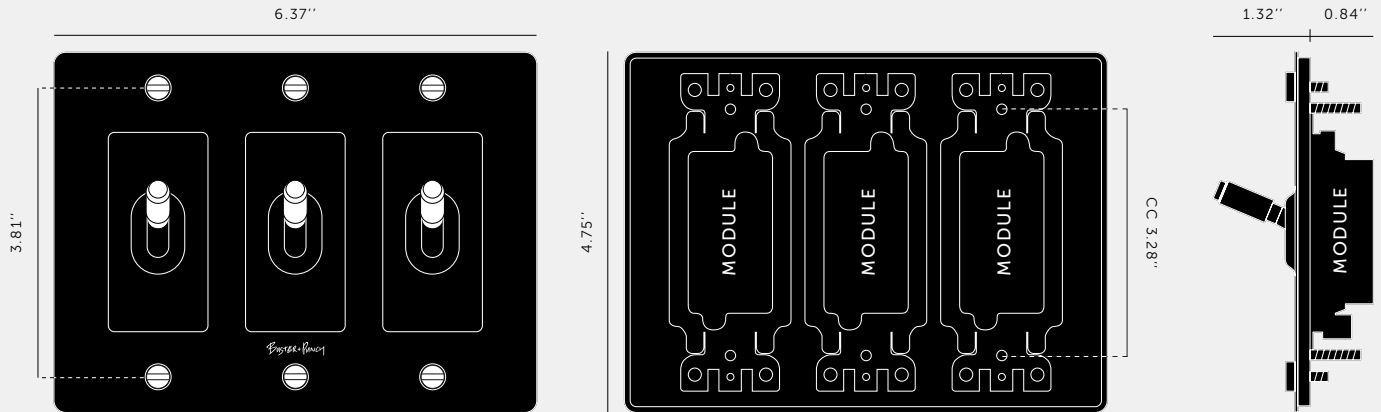
---

[ gang. **3G.** ]

---

[ info. **MEASUREMENTS.** ]

---



---

[ info. **SPECIFICATIONS.** ]

---

Our Metal Electricity range has solid stainless steel plates, in our signature white, steel, brass, smoked bronze and black finishes.

**FYI: THIS PIECE HAS A 1/8 INCH SHADOW GAP WHEN INSTALLED.**

Module: NTM-01384 (US-TO-MO-A) (2 per unit)  
Style: ON/OFF Toggle switch  
120-277V AC / 15A / 60Hz  
3-Way switching (can be controlled from 2 locations)  
Certification: cETLus 5005703

---

[ info. **CARE INSTRUCTIONS.** ]

---

Wipe with damp cloth with no loose hairs, avoid using any chemicals. All finishes are prone to aging.

---

[ info. **CERTIFICATION.** ]

---

Plates: Underwriters Laboratories cULus listed for use throughout North America.

Toggle: Intertek cETLus listed number for use throughout North America.

---

[ please. **NOTE.** ]

---

**DISCLAIMER:** Always consult a trade professional when installing this toggle switch. Buster + Punch is not responsible for the usage or feasibility of installation requirements. This product is not suitable for damp or wet environments.

# BUSTER+PUNCH

LONDON

[ product. ]

## ELECTRICITY / 4G TOGGLE SWITCH

[ motion. **ON/OFF.** ]

[ look. **CROSS.** ]

[ detail. **COIN SCREW.** ]

[ born. **LONDON.** ]

[ region. **NORTH AMERICA.** ]

A solid metal 4G toggle switch with a diamond-cut knurled knob to feel amazing with every touch. The switch is finished with a flat plate and our signature solid metal coin screws. Available in five different finishes. You can also team them up with our dimmers, duplex and USB outlets in matching finishes.



[ finish. **STEEL.** ]



[ finish. **BRASS.** ]



[ finish. **SMOKED BRONZE.** ]



[ finish. **BLACK.** ]

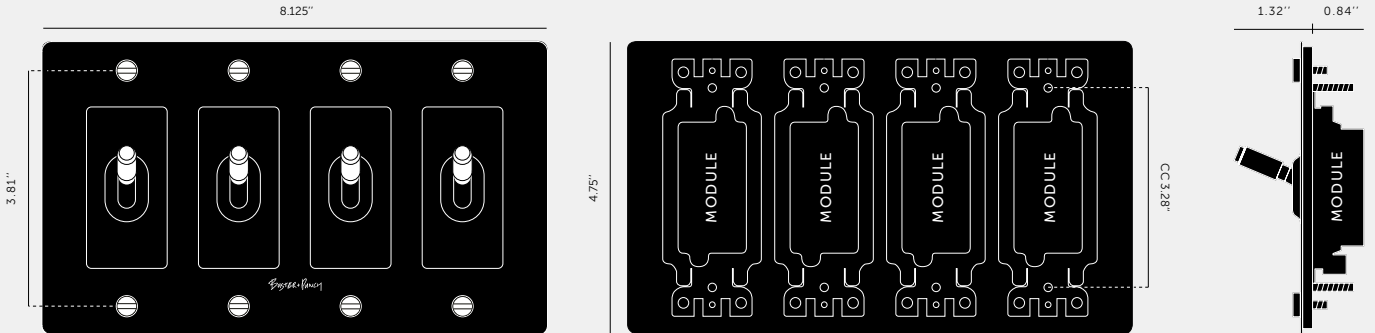


[ finish. **WHITE.** ]



[ gang. **4G.** ]

[ info. **MEASUREMENTS.** ]



[ info. **SPECIFICATIONS.** ]

Our Metal Electricity range has solid stainless steel plates, in our signature white, steel, brass, smoked bronze and black finishes.

**FYI: THIS PIECE HAS A 1/8 INCH SHADOW GAP WHEN INSTALLED.**

Module: NTM-01384 (US-TO-MO-A) (2 per unit)  
Style: ON/OFF Toggle switch  
120-277V AC / 15A / 60Hz  
3-Way switching (can be controlled from 2 locations)  
Certification: cETLus 5005703

[ info. **CARE INSTRUCTIONS.** ]

Wipe with damp cloth with no loose hairs, avoid using any chemicals. All finishes are prone to aging.

[ info. **CERTIFICATION.** ]

Plates: Underwriters Laboratories cULus listed for use throughout North America.

Toggle: Intertek cETLus listed number for use throughout North America.

[ please. **NOTE.** ]

**DISCLAIMER:** Always consult a trade professional when installing this toggle switch. Buster + Punch is not responsible for the usage or feasibility of installation requirements. This product is not suitable for damp or wet environments.

**FAQ SHEET**

CATEGORY	QUESTION	ANSWER
<b>GENERAL</b>	How do I clean my electricity collection?	A slightly damp microfiber cloth is best, never use any chemicals as this will damage the metal surface.
<b>TOGGLE</b>	I need more than 2 switches in the same location. Do I need to have separate plates?	We also offer separate modules and plates up to 4G for larger requirements. Please refer to our website for purchasing options, or contact one of our sales representatives for more information.
<b>TOGGLE</b>	Are these toggles suitable for 4-Way switching? (control from 3 or more locations)	Unfortunately 4-Way switching is not supported on this module yet. Please ask one of our sales team if this will be available from us in the near future.
<b>TOGGLE</b>	Are these toggle switches compatible with smart home systems?	This toggle performs a latching on-off function only. Although each smart home system is different, most require a momentary or 'normally open' switches to function properly. Please ask one of our sales team if this will be available from us in the near future.
<b>CUSTOMIZE</b>	Can I customize the appearance of my toggle switch?	Our toggle modules are customizable with interchangeable details kits in 5 finishes. Refer to our website for options, or contact one of our sales representatives for more information.
<b>CUSTOMIZE</b>	Can I combine different modules on the same plate?	Our plates are designed to fit a combination of modules, from 1-4G. Please refer to our website for options, or contact one of our sales representatives for more information.
<b>INSTALL</b>	Will this dimmer work with my existing wall box?	Please reference the key dimensions of the module and mounting holes when checking compatibility. To ensure a flush fit to the wall, we always recommend flush mounted wall boxes, which are widely available from major retailers.
<b>INSTALL</b>	Can I install my toggle myself?	We strongly recommend that our products are always installed by a qualified electrician. Always refer to the safety notices within the instruction manual before attempting any electrical installation.
<b>TOGGLE</b>	Are your toggle modules tested for use throughout North America?	Yes, our modules are certified for use throughout North America.  Module cETLus listed number: 5005703 Conforms to UL STD. 20" Certified to CSA STD. C22.2 NO. 111 All modules are marked with the listed number.  Plate cULus listed number: 507052.