

# Audo



UPHOLSTERY

FEBRUARY 2024, EU

The Audo Upholstery Program is an overview of the textile and leathers available for Audo upholstered furniture. All textile and leather options are available in all colors. You'll find over 100 fabric and leather options, with the most popular configurations available with expedited delivery in our Quick Ship program. Custom upholstery orders from our Audo Upholstery Program (SPEC) are ready to ship with standard delivery lead times. Our Fixed Combinations listed in this Brand Book are suggested upholsteries selected by our design team, and deliver with standard lead times.

We are happy to upholster furniture using customer's own materials (COM) with extended delivery lead times, upon fabric approval. COM products are to be calculated by PC1T if in textile and PC1L if in leather, excluding the price of the fabric.

Please note that the color references in this upholstery programme are only intended as a guide. For further information please see manufacturer websites, or contact your local Audo Sales Representative for samples or further information.

KVADRAT.DK  
SAHCO.COM  
NEVOTEX.COM  
JAB.DE  
DANISHARTWEAVING.COM  
DESIGNERSGUILD.COM  
DEDAR.COM



- TESTED AND APPROVED.
- NOT TESTED, BUT PRE-APPROVED BY SUPPLIER

Use table to determine the upholstery options available for fabric-covered items.

	AFTERROOM	BRASILIA	CAIRN	CO CHAIR	CONSTANCE CHAIR	CONSTANCE SOFA	EAVE COLLECTION	HARBOUR CHAIR	HARBOUR LOUNGE CHAIR	INGEBORG	KNITTING CHAIR	MERKUR	MINGLE	MY OWN CHAIR	OFFSET	PASSAGE	READY	TEAROOM CLUB-SIDE & LOUNGE CHAIR W/SWIVEL	TEAROOM LOUNGE CHAIR	TEAROOM SOFA	THE TIRED MAN	VILHELM	THE PENGUIN	ELIZABETH	ODA	PAGODE	RADIOHUS	THE SEAL
PRICE CATEGORY 0																												
AUDO BOUCLÉ, AUDO	●	●	●	●	●	○	●	●	●	●	●	●	○	○	●	○	●	●	●	●	●	○	○	○		○	○	○
PRICE CATEGORY 1																												
BARNUM BOUCLÉ, AUDO	●	●	●	●	○	○	●	●	○	○	○	●	○	○	●	○	●	●	●	●	●	○	○	○		○	○	○
CHAMPION, JAB	●	●	●	●	○	○	●	●		○	●	○	○	○	●	○	○	●	●	●	○	○	○	○		○	○	○
ILLUSION, NEVOTEX	●	○	●	●	○	○	●	●		○	●	○	○	○	●	○	○	○	○	○	○	○	○	○				○
HOT MADISON, JAB	●	●	●	●	●	○	●	●	●	●		○	○	○	●	○	○	●	●	●	○	○	○	○		○	○	○
MAPLE, KVADRAT	●	●	●	●	○	○	●	●		○	●	○	○	○	●	○	○	●	●	●	○	○						
REMIX, KVADRAT	●	●	●	●	○	○	●	●	●	○	●	○	○	●	●	○	●	●	●	●	○	○	●	●		●	●	●
RE-WOOL, KVADRAT	●	○	●	●	○	○	●	●	●	○	○	○	○	○	●	○	●	●	●	●	○	○	●	●		●	●	●
PRICE CATEGORY 2																												
CANVAS 2, KVADRAT	●	●	●	●	○	○	●	●	●	○	●	○	○	○	●	○	●	●	●	●	○	○	○	○		○	○	○
CLAY, SAHCO, KVADRAT	●	●	○	●	○	○	●	●	○	○	○	○	○	○	●	○	○	●	●	●	○	○	○	○		○	○	○
FIORD, KVADRAT	●	●	●	●	○	○	●	●	●	●	●	○	○	●	●	○	●	●	●	●	○	●	●	●		●	●	●
HALLINGDAL 65, KVADRAT	●	●	●	●	●	●	●	●	●	●	●	●	●	●	●	○	●	●	●	●	●	●	●	●	●	●	●	●
MOSS, SAHCO, KVADRAT	●	●	●	●	○	○	●	●	●	○	●	○	○	○	●	○	●	●	●	●	●	●	●	●	○	○	○	○
REFLECT, KVADRAT	●	○	○	●	○	○	●	●		○	○	○	○	○	○	○	○	○	○	○	○	○	○	○		○	○	○
SAVANNA, KVADRAT	●	●	●	●	○	○	●	●	●	○	●	○	○	○	●	○	●	●	●	●	○	○	○	○	○	○	○	○
STEELCUT TRIO 3, KVADRAT	●	○	●	●	○	○	●	●	●	○	●	○	○	○	●	○	○	●	●	●	○	○	●	●		○	○	●
PRICE CATEGORY 3																												
ARCTIC, JAB	○	●	○	○	○	○	●	●	○	○	○	○	○	○	○	○	○	●	●	○	○	○	○	○	○	○	○	○
SAFIRE, SAHCO, KVADRAT	●	●	●	●	○	○	●	●	●	○	●	○	○	●	●	○	○	●	●	●	○	○	●	○	○	●	●	○
VIDAR 4, KVADRAT	●	●	●	●	○	○	●	●	●	○	○	○	○	●	●	○	○	●	●	●	○	○	●	○	○	○	○	○
ZERO, SAHCO	○	●	●	●	●	●	●	●	○	●	○	○	●	●	●	○	○	○	○	●	●	●	○	○	○	○	○	○
PRICE CATEGORY 4																												
CABANON SOFT, DESIGNERS GUILD	○	○		○				○	○		○	○				○		●										
GRAND MOHAIR, DANISH ART WEAVING	○	○	●	●	●	●		○	●	●	○	○	●	○		○	○	○	○	●	○	●	○	○		○	○	○
LUPO, DEDAR	●	○	○	●	○	○	●	●	○	○	○	○	○	○	●	○	○	●	●	○	○	○	○	○	○	○	○	○

*Textile Category 0*

AUDO BOUCLÉ  
by Audo

With its distinctive appearance, Audo Bouclé is characterised by its looped yarns that create a textured, three-dimensional surface.

Soft, warm and durable, it is available in a range of beautiful muted colours.



PRICE CATEGORY  
0

MATERIALS  
78% Acrylic,  
20% Polyester  
2% Viscose

DURABILITY  
60.000 Martindale

LIGHTFASTNESS  
5-6 (ISO 1-8)

PILLING  
4-5 (ISO 1-5)

C&M (BS5852-0/1)  
No

CAL 117  
Yes

CRIB 5 (BS5852-5)  
No



02



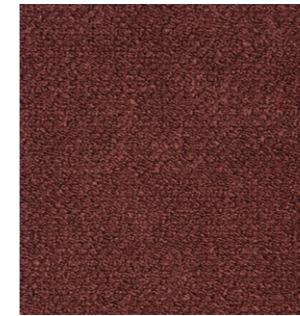
06



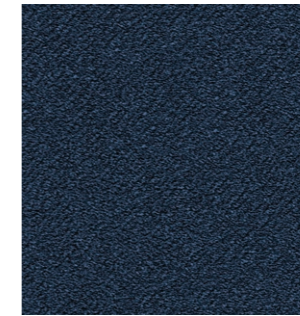
08



07



10



15



16



20



21

*Textile Category 1*

BARNUM BOUCLE  
*by Audo*

Woven from a cotton-wool blend, Barnum Bouclé is crafted with twisted, looped yarns for a durable, nubby surface finish that enhances the softness and comfort of the fabric.

Available in a range of beautiful muted colours.

---

PRICE CATEGORY  
1

---

MANUFACTURER  
Audo

---

MATERIALS  
45% Cotton  
19% Viscose  
15% Wool  
13% PC  
8% Polyester

---

DURABILITY  
60.000 Martindale

---

LIGHTFASTNESS  
5 (ISO 1-8)

---

PILLING  
4 (ISO 1-5)

---

C&M (BS5852-0/1)  
Yes

---

CAL 117  
Yes

---

CRIB 5 (BS5852-5)  
No - Cannot be treated



04



05



07



10



11



13



19



21

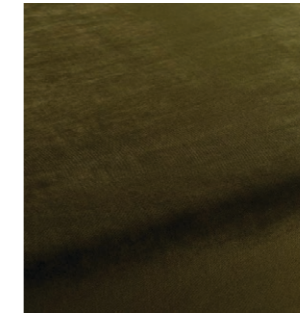


24

The solid-hued upholstery fabric impresses with its adaptability, durability and luxurious texture. In a palette of beautiful colours, the sophisticated velvet upholstery fabric provides myriad opportunities for enhancing furniture and interiors.



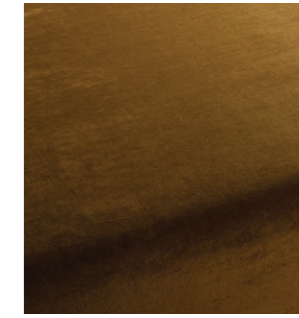
1-3114-022



1-3114-035



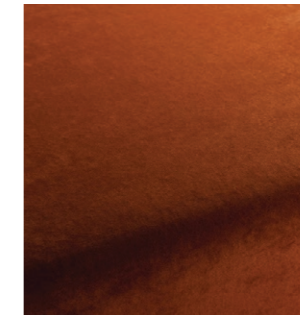
1-3114-041



1-3114-042



1-3114-054



1-3114-061



1-3114-070



1-3114-073

---

PRICE CATEGORY  
1

---

MANUFACTURER  
JAB

---

MATERIALS  
100% Polyester

---

DURABILITY  
70.000 Martindale

---

LIGHTFASTNESS  
5 (ISO 1-8)

---

PILLING  
3 (ISO 1-5)

---

C&M (BS5852-0/1)  
Yes

---

CAL 117  
Yes

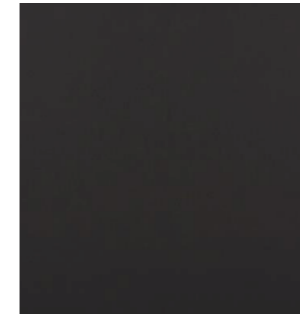
---

CRIB 5 (BS5852-5)  
Yes



ILLUSION  
*by Nevotex*

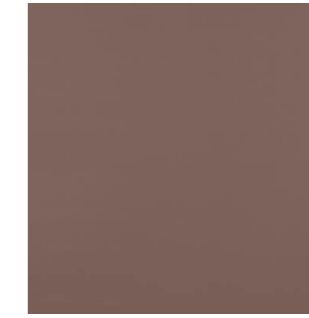
A synthetic leather crafted from Polyurethane (PU), Illusion is a versatile choice for a range of applications, particularly well-suited for use in hospitality settings and other high-traffic environments with elevated hygiene requirements thanks to its easy-clean surface.



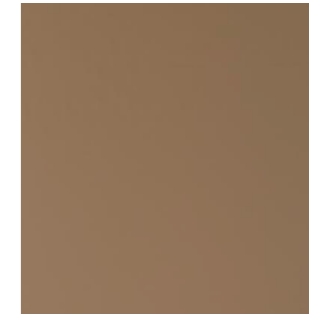
00110



44388



47124



85020



85352

## PRICE CATEGORY

1

## MANUFACTURER

Nevotex

## MATERIALS

100% Polyester

## THICKNESS

1 mm

## DURABILITY

500.000 Martindale

## LIGHTFASTNESS

&gt;7 (ISO 1-8)

## PILLING

4-5 (ISO 1-5)

## C&amp;M (BS5852-0/1)

Yes

## CAL 117

Yes

## CRIB 5 (BS5852-5)

Yes

HOT MADISON REBOOT  
by JAB

The subtly elevated surface of Hot Madison Reboot gives the cotton-linen blend a laid-back charm and an exceptionally pleasant texture. Low-maintenance and durable, its all-encompassing utility allows it to effortlessly fit into multiple applications and interior styles where elegant neutrals and muted mid-tones take centre stage.




---

PRICE CATEGORY  
1

---

MANUFACTURER  
JAB

---

MATERIALS  
63% Cotton  
37% Linen

---

DURABILITY  
55.000 Martindale

---

LIGHTFASTNESS  
4-5 (ISO 1-8)

---

PILLING  
4-5 (ISO 1-5)

---

C&M (BS5852-0/1)  
No

---

CAL 117  
No

---

CRIB 5 (BS5852-5)  
No



CH1249-056



CH1249-070



CH1249-089



CH1249-095



CH1249-233



CH1249-495



CH1249-503



CH1249-550



CH1249-572



CH1249-713

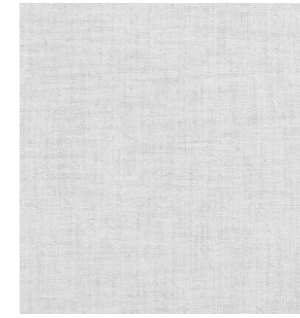


CH1249-718

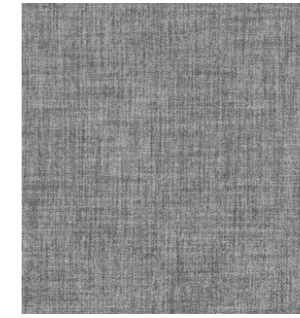
MAPLE  
by Kvadrat



Crafted with aero finishing for an exceptionally soft feel, Maple features three tonal chenille yarns and a plush pile that reveals the intricacies of its weave and a casually irregular expression. Viscose lends a unique shimmer, intensifying with changes in light and perspective.



0112



0162



0222



0352



0392



0722



0742

PRICE CATEGORY  
1

MANUFACTURER  
Kvadrat

MATERIALS  
63% Cotton  
37% Linen

DURABILITY  
55.000 Martindale

LIGHTFASTNESS  
4-5 (ISO 1-8)

PILLING  
4-5 (ISO 1-5)

C&M (BS5852-0/1)  
No

CAL 117  
No

CRIB 5 (BS5852-5)  
No

REMIX 3  
by Kvadrat



Remix embodies simplicity, elegance and minimalism from a distance, while revealing complexity, nuance and vibrancy up close. This duality is accomplished by intricately weaving two contrasting yarns, each carrying up to three distinct hues.

Its remarkable depth of colour seamlessly transitions into a uniform shade when viewed from a distance.

---

PRICE CATEGORY  
1

---

MANUFACTURER  
Kvadrat

---

MATERIALS  
90% New Wool (Worsted)  
10% Nylon

---

DURABILITY  
100.000 Martindale

---

LIGHTFASTNESS  
6 (ISO 1-8)

---

PILLING  
4 (ISO 1-5)

---

C&M (BS5852-0/1)  
Yes

---

CAL 117  
Yes

---

CRIB 5 (BS5852-5)  
No - Can be treated



0123



0133



0143



0163



0223



0233



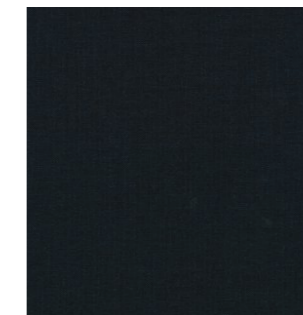
0433



0733



0852



0873



0954

RE-WOOL  
by Kvadrat



Re-wool is a luxurious upholstery fabric that champions sustainability. Made with recycled wool, it features a woven stitch-like surface with a remarkable colour depth that creates a dynamic visual interplay on furniture surfaces.

---

PRICE CATEGORY  
1

---

MANUFACTURER  
Kvadrat

---

MATERIALS  
45% Recycled Wool (Worsted)  
45% New Wool (Worsted)  
10% Nylon

---

DURABILITY  
100.000 Martindale

---

LIGHTFASTNESS  
6 (ISO 1-8)

---

PILLING  
4 (ISO 1-5)

---

C&M (BS5852-0/1)  
Yes

---

CAL 117  
Yes

---

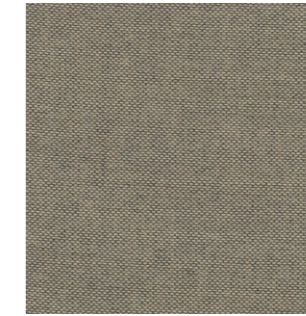
CRIB 5 (BS5852-5)  
No - Can be treated



0128



0198



0218



0378



0448



0558



0718



0768

## *Textile Category 2*

CANVAS 2  
by Kvadrat

A structured and durable worsted wool upholstery fabric ideal for expansive surfaces, Canvas 2 features a subtle weave comprised of three melange yarns for colour richness and texture. While appearing as a serene, unicoloured textile from a distance, upon closer inspection it reveals six colour nuances.

PRICE CATEGORY  
2

MANUFACTURER  
Kvadrat

MATERIALS  
90% New Wool (Worsted)  
10% Nylon

DURABILITY  
100.000 Martindale

LIGHTFASTNESS  
5-6 (ISO 1-8)

PILLING  
4 (ISO 1-5)

C&M (BS5852-0/1)  
Yes

CAL 117  
Yes

CRIB 5 (BS5852-5)  
No - Can be treated



114



124



134



154



174



216



244



254



356



454



576



794



996

CLAY  
by Sahco



Clay is the result of skilfully interwoven warp and weft yarns. The cotton-linen blend upholstery fabric has a uniquely textured surface that exudes casual elegance. Enhanced with a supportive backing, Clay is an excellent choice for upholstering furniture.

---

PRICE CATEGORY  
2

---

MANUFACTURER  
Sahco

---

MATERIALS  
76% Linen  
21% Cotton  
3% Polyester

---

DURABILITY  
45.000 Martindale

---

LIGHTFASTNESS  
5-6 (ISO 1-8)

---

PILLING  
4 (ISO 1-5)

---

C&M (BS5852-0/1)  
Yes

---

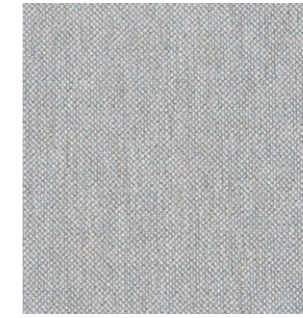
CAL 117  
No

---

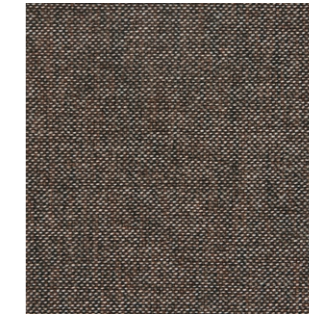
CRIB 5 (BS5852-5)  
No - Can be treated



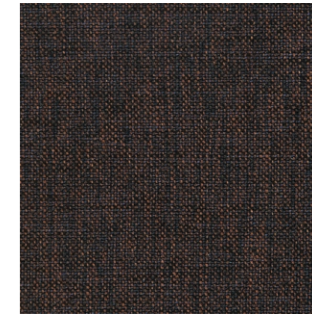
0002



0003



0004



0005



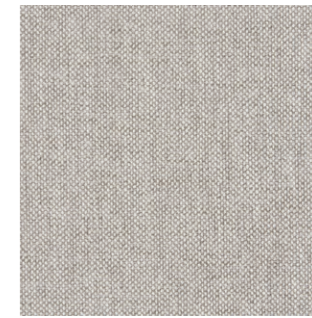
0008



0010



0011



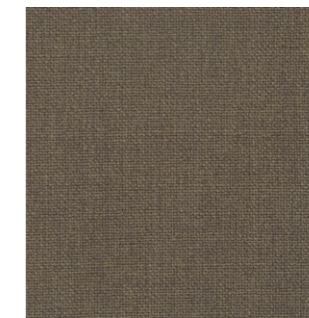
0012



0015



0016



0017



FIORD 2  
by Kvadrat



A versatile upholstery fabric with a three-dimensional appearance, Fiord 2 cleverly merges a mélange yarn with a unicoloured yarn. Inspired by the moonlight casting a pearlescent glow on the rippling waters of a Norwegian fjord, its refined expression results in pearl-like dots that dance across the fabric's surface.

---

PRICE CATEGORY  
2

---

MANUFACTURER  
Kvadrat

---

MATERIALS  
92% New Wool (Worsted)  
8% Nylon

---

DURABILITY  
60.000 Martindale

---

LIGHTFASTNESS  
6 (ISO 1-8)

---

PILLING  
4-5 (ISO 1-5)

---

C&M (BS5852-0/1)  
Yes

---

CAL 117  
Yes

---

CRIB 5 (BS5852-5)  
No - Can be treated



121



191



271



322



371



451



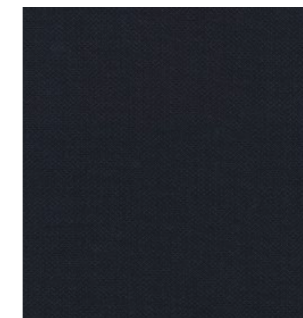
521



591



751



782



951



961

HALLINGDAL 65  
by Kvadrat

Originally designed by Nanna Ditzel in 1965, Hallingdal 65 is an exceptionally durable upholstery fabric that features a harmonious blend of wool and viscose, both dyed before spinning to accentuate their texture. The wool contributes superior durability and flexibility, while the viscose enhances the colour with brilliance and depth.

PRICE CATEGORY  
2

MANUFACTURER  
Kvadrat

MATERIALS  
70% New Wool  
30% Viscose

DURABILITY  
100.000 Martindale

LIGHTFASTNESS  
7 (ISO 1-8)

PILLING  
3-4 (ISO 1-5)

C&M (BS5852-0/1)  
Yes

CAL 117  
Yes

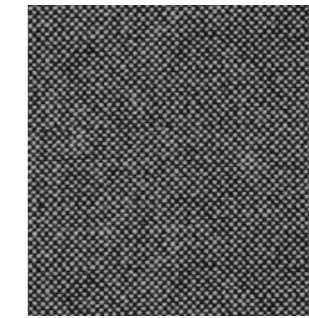
CRIB 5 (BS5852-5)  
Yes



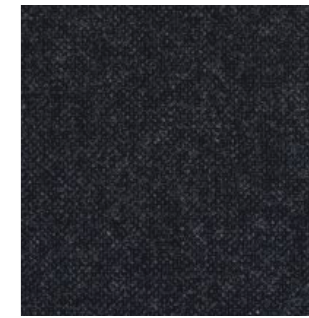
0110



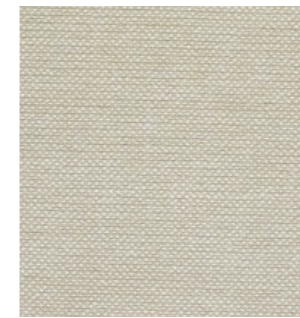
0130



0166



0180



0200



0220



0224



0227



0270



0350



0600



0694

MOSS  
by Sahco



Moss stands out with its textured surface, a combination of twisted yarn and chenille that not only imparts a sense of movement to the fabric, but also provides a soft handle, adding a distinctive dimension to upholstered furniture. Colour options include both one- and two-tone combinations.

PRICE CATEGORY  
2

MANUFACTURER  
Kvadrat

MATERIALS  
52% Cotton  
22% Viscose  
14% Polyacrylic  
6% Linen  
3% Polyester  
3% Nylon

DURABILITY  
50.000 Martindale

LIGHTFASTNESS  
5-7 (ISO 1-8)

PILLING  
4-5 (ISO 1-5)

C&M (BS5852-0/1)  
Yes

CAL 117  
Yes

CRIB 5 (BS5852-5)  
No - Can be treated



0001



0002



0004



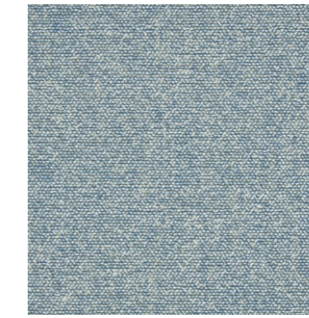
0005



0006



0008



0010



0011



0012



0013



0016



0018

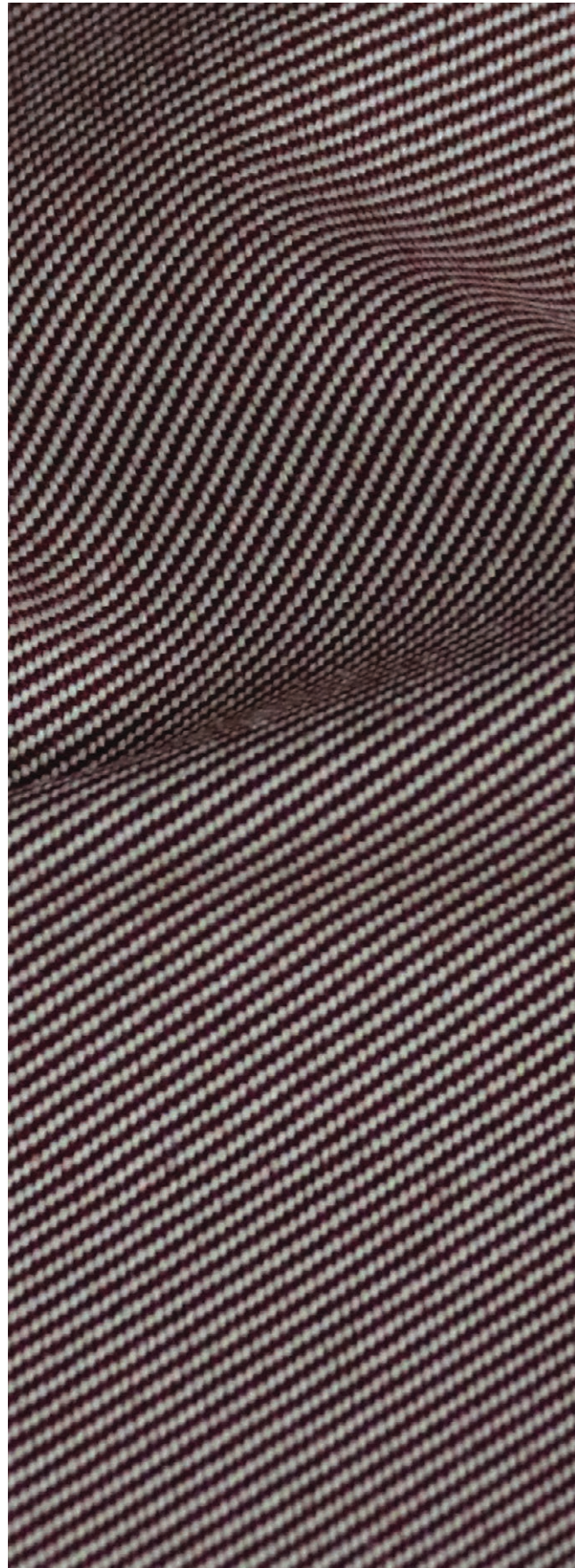


0019



0022

REFLECT  
by Kvadrat



An elegant twill weave upholstery fabric, Reflect is a testament to sustainable design without compromising on sophistication. Spun from post-consumer recycled polyester, it has a natural look and an exceptionally tactile feel while delivering impressive functional performance suitable for a wide range of environments.

---

PRICE CATEGORY  
2

---

MANUFACTURER  
Kvadrat

---

MATERIALS  
100% Post-consumer  
Recycled Polyester

---

DURABILITY  
100.000 Martindale

---

LIGHTFASTNESS  
6 (ISO 1-8)

---

PILLING  
4 (ISO 1-5)

---

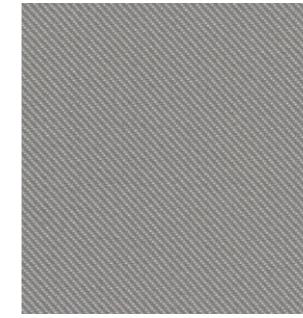
C&M (BS5852-0/1)  
No - Can be treated

---

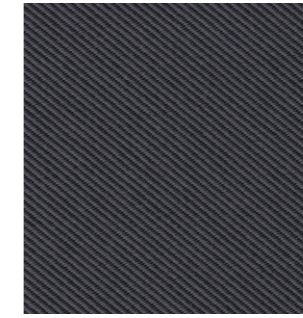
CAL 117  
Yes

---

CRIB 5 (BS5852-5)  
No - Can be treated



0114



0174



0184



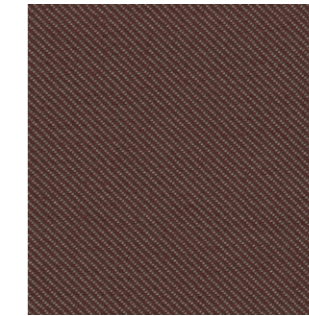
0194



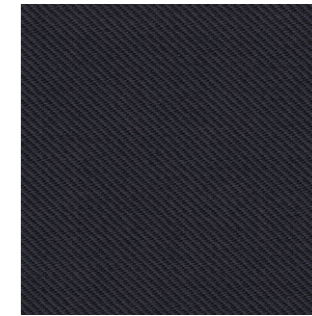
0204



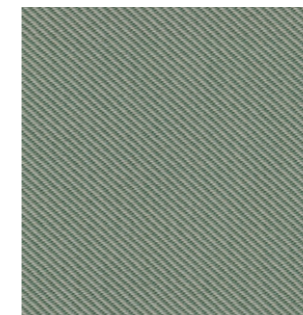
0344



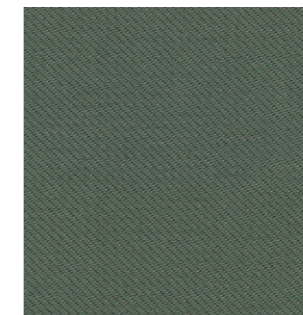
0374



0694

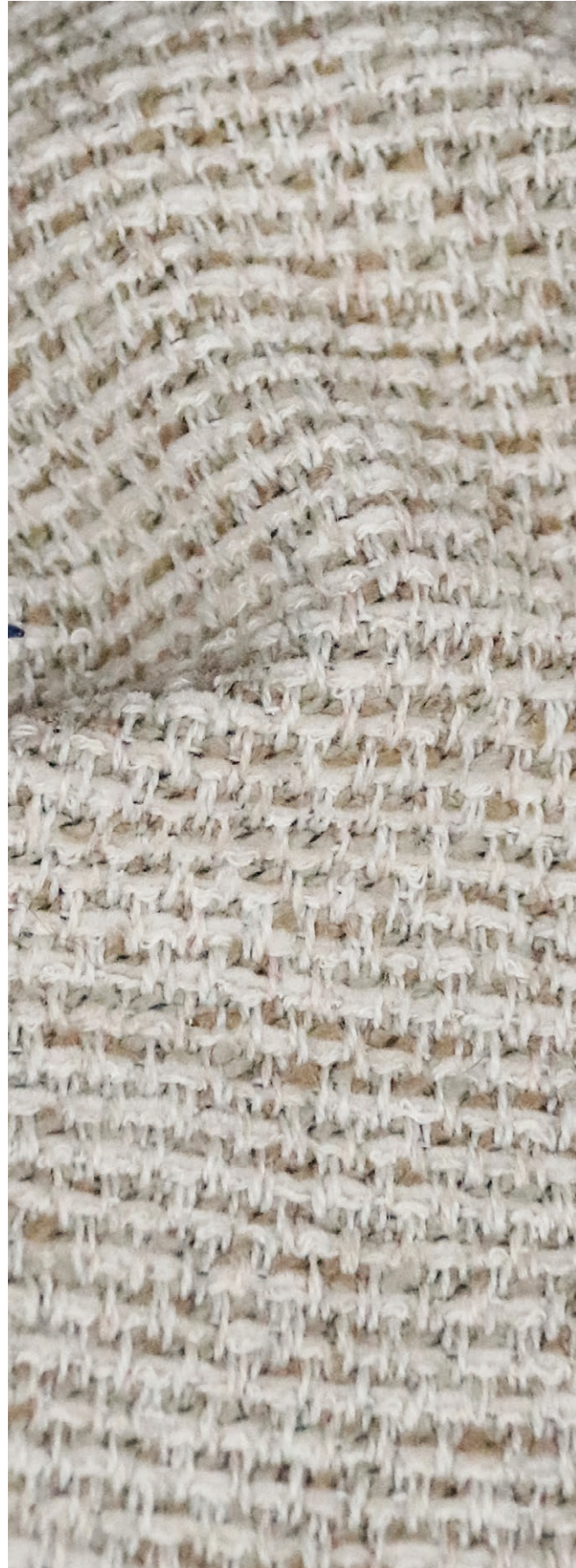


0924



0944

SAVANNA  
by Kvadrat



Savanna combines intertwining yarns and materials to provide the unique sense of depth and richness that give it its distinct character. Shiny, matte and bouclé yarns create an elegant and visually compelling surface with a rich and irregular texture, revealing a captivating interplay of details when viewed up close.

---

PRICE CATEGORY  
2

---

MANUFACTURER  
Kvadrat

---

MATERIALS  
34% Polyester  
31% New Wool  
26% Polyacrylic  
4% Cotton  
3% Nylon  
2% Linen

---

DURABILITY  
45.000 Martindale

---

LIGHTFASTNESS  
6-7 (ISO 1-8)

---

PILLING  
3 (ISO 1-5)

---

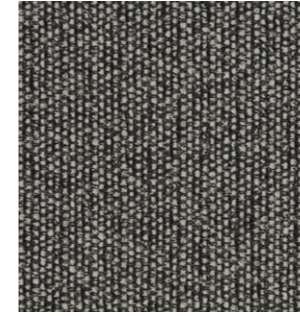
C&M (BS5852-0/1)  
No - Can be treated

---

CAL 117  
Yes

---

CRIB 5 (BS5852-5)  
No - Can be treated



152



202



622



442

STEELCUT TRIO 3  
by Kvadrat

A durable woollen upholstery fabric with a three-dimensional surface, Steelcut Trio 3 has an intricate weave yet maintains a simple and precise expression. Yarn-dyed and spun from three coloured threads, it has a distinctive and sophisticated pattern reminiscent of small pyramids.



205



253



383

---

PRICE CATEGORY  
2

---

MANUFACTURER  
Kvadrat

---

MATERIALS  
90% New Wool (Worsted)  
10% Nylon

---

DURABILITY  
100.000 Martindale

---

LIGHTFASTNESS  
6-7 (ISO 1-8)

---

PILLING  
4 (ISO 1-5)

---

C&M (BS5852-0/1)  
Yes

---

CAL 117  
Yes

---

CRIB 5 (BS5852-5)  
No

## *Textile Category 3*



Skilfully crafted from a blend of yarns, Arctic has a luxurious texture that adds a touch of sophistication to any interior. Combining polyacrylic for durability, viscose for a soft and elegant feel and polyester for resilience, this bouclé fabric strikes the perfect balance between style and functionality.

---

PRICE CATEGORY  
3

---

MANUFACTURER  
Jab

---

MATERIALS  
51% Polyacrylic  
31% Viscose  
18% Polyester

---

DURABILITY  
30.000 Martindale

---

LIGHTFASTNESS  
5 (ISO 1-8)

---

PILLING  
4 (ISO 1-5)

---

C&M (BS5852-0/1)  
No - Cannot be treated

---

CAL 117  
No - Cannot be treated

---

CRIB 5 (BS5852-5)  
No - Cannot be treated



1-1365-040



1-1365-070



1-1365-091



SAFIRE  
by Sahco



Safire has a subtle handwoven appearance that is both distinctive and dynamic. Soft and textured bouclé and chenille yarns not only enhance its woolly feel and soft allure but also impart a lively two-tone effect.

---

PRICE CATEGORY  
3

---

MANUFACTURER  
Sahco

---

MATERIALS  
43% Viscose  
17% Polyacrylic  
15% New wool  
9% Cotton  
8% Linen  
8% Polyester

---

DURABILITY  
40.000 Martindale

---

LIGHTFASTNESS  
5-6 (ISO 1-8)

---

PILLING  
3 (ISO 1-5)

---

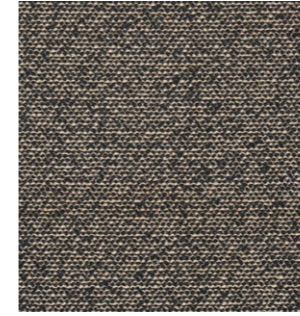
C&M (BS5852-0/1)  
Yes

---

CAL 117  
Yes

---

CRIB 5 (BS5852-5)  
No - Cannot be treated



001



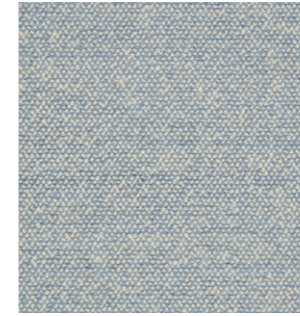
002



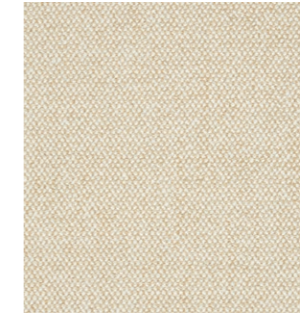
006



008



012



014

VIDAR 4  
by Kvadrat



Distinguished by its tightly woven structure and nubby quality, the woollen Vidar 4 upholstery fabric has an inviting, comfortable texture that evokes images of a favourite knit. The weave's soft surface offsets the deep, shadowy tones within, lending a multifaceted richness to each colour option.

---

PRICE CATEGORY  
3

---

MANUFACTURER  
Kvadrat

---

MATERIALS  
94% New Wool  
6% Nylon

---

DURABILITY  
100.000 Martindale

---

LIGHTFASTNESS  
7 (ISO 1-8)

---

PILLING  
4 (ISO 1-5)

---

C&M (BS5852-0/1)  
Yes

---

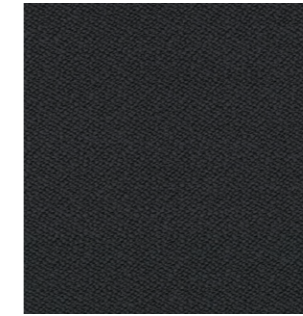
CAL 117  
Yes

---

CRIB 5 (BS5852-5)  
No - Cannot be treated



0146



0182



0323



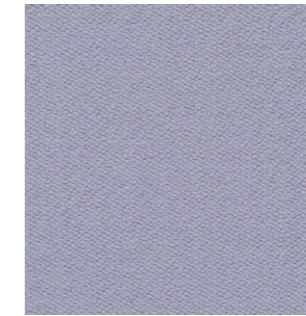
0333



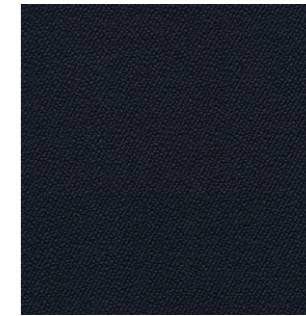
0526



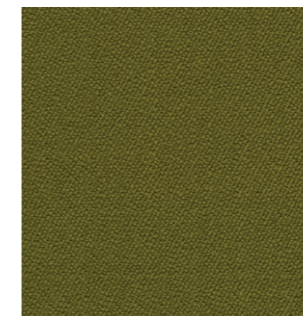
0693



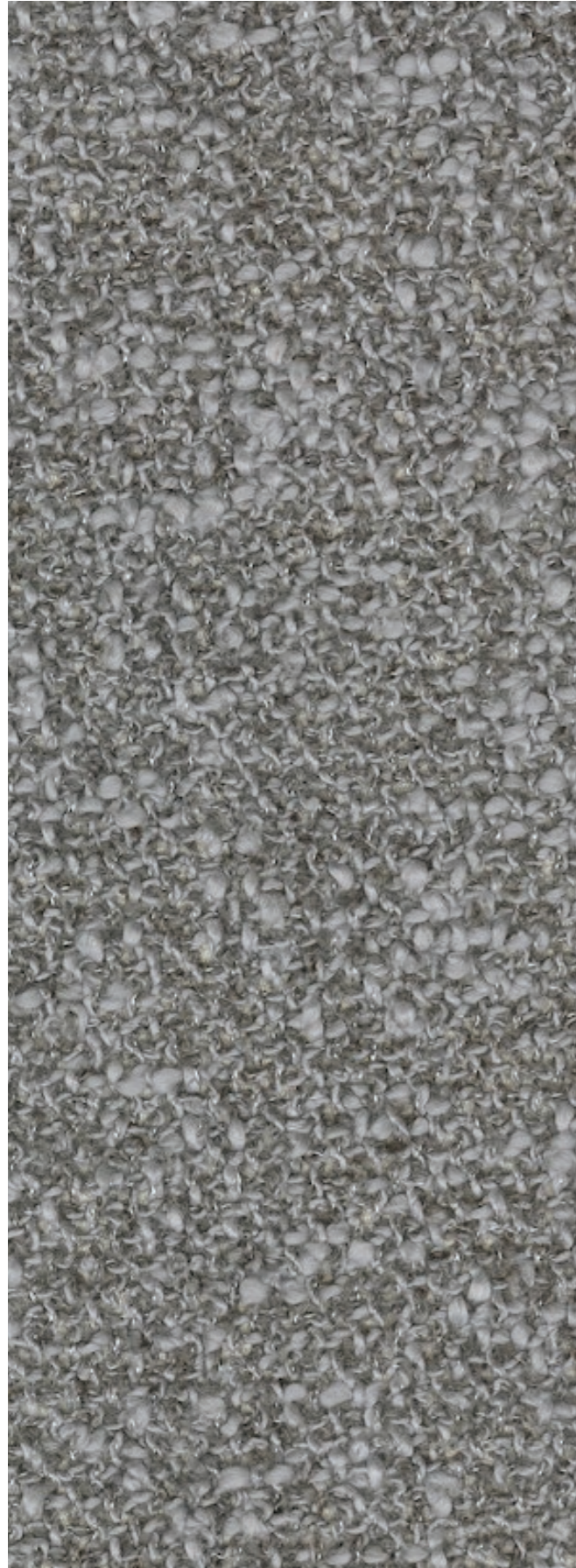
0723



0786



0956



Inspired by Parisian couture, this bouclé upholstery textile showcases an elegant and irregular design. The inclusion of pearl-effect yarn in both warp and weft not only provides a luxurious feel but also gives a refined appearance with subtle tonal variations.



0001

---

PRICE CATEGORY  
3

---

MANUFACTURER  
Kvadrat

---

MATERIALS  
65% Cotton  
20% Polyacrylic  
15% Polyester

---

DURABILITY  
70.000 Martindale

---

LIGHTFASTNESS  
6 (ISO 1-8)

---

PILLING  
5 (ISO 1-5)

---

C&M (BS5852-0/1)  
No - Cannot be treated

---

CAL 117  
No

---

CRIB 5 (BS5852-5)  
No - Cannot be treated

## *Textile Category 4*

CABANON SOFT  
by *Designers Guild*

Christian Lacroix's timeless stripe is reimagined as upholstery on Cabanon Soft, a supremely soft velvet woven with a sumptuous cotton-rich pile for the perfect blend of sophistication, comfort and versatility.



FCL7029/04 (ROSEAU)

---

PRICE CATEGORY  
4

---

MANUFACTURER  
Designers Guild

---

MATERIALS  
83% Cotton  
17% Polyamide

---

DURABILITY  
50.000 Martindale

---

LIGHTFASTNESS  
4 (ISO 1-8)

---

PILLING  
4-5 (ISO 1-5)

---

C&M (BS5852-0/1)  
No

---

CAL 117  
No

---

CRIB 5 (BS5852-5)  
No

GRAND MOHAIR  
by *Danish Art Weaving*

A premium choice for upholstery, thanks to its comfort, durability and aesthetic appeal, Grand Mohair is spun from the fleece of the Angora goat, revered for its luxurious natural appeal. Exceptionally soft to the touch and resistant to wear and tear, its inherent lustre creates a sophisticated appearance.



1103



2600



8205

---

PRICE CATEGORY  
4

---

MANUFACTURER  
Danish Art Weaving

---

MATERIALS  
100% Mohair

---

DURABILITY  
200.000 Wyzenbeek

---

LIGHTFASTNESS  
4,5 (ISO 1-8)

---

PILLING  
5 (ISO 1-5)

---

C&M (BS5852-0/1)  
Yes

---

CAL 117  
Yes

---

CRIB 5 (BS5852-5)  
Yes

LUPO  
*by Dedar*

Characterised by its looped yarns, the flame-resistant Lupo bouclé is a dense and durable upholstery fabric with a high resistance to wear and tear. Its tactile surface adds visual interest and a soft quality to furniture, making it a comfortable choice for a range of applications.

---

PRICE CATEGORY  
4

---

MANUFACTURER  
Dedar

---

MATERIALS  
74% Polyester Trevira CS  
26% Polyester FR

---

DURABILITY  
80.000 Martindale

---

LIGHTFASTNESS  
4-5 (ISO 1-8)

---

C&M (BS5852-0/1)  
Yes

---

CAL 117  
Yes

---

CRIB 5 (BS5852-5)  
No - Can be treated



T19028\_004



T19028\_005



T19028\_008

The Audo upholstery programme shows an overview of our textile and leather standard programme. All textile and leather collections are available in all colours.

Please note that the colour references are only intended as a guide. For further information please see manufacturer websites, or contact your local Audo sales representative.

Selection of textiles or leather outside of our upholstery programme, is subject to final testing and approval. Additional deliverytime may also occur.

[SORENSENLEATHER.COM](https://www.sorensenleather.com)  
[NEVOTEX.COM](https://www.nevotex.com)  
[CA-MO.COM](https://www.ca-mo.com)  
[SKANDILOCK.COM](https://www.skandilock.com)





- TESTED AND APPROVED.
- NOT TESTED, BUT PRE-APPROVED BY SUPPLIER

Use table to determine the upholstery options available for fabric-covered items.

PRICE CATEGORY 0	AFTERROOM	BRASILIA	CO CHAIR	CONSTANCE CHAIR	CONSTANCE SOFA	HARBOUR CHAIR	HARBOUR LOUNGE CHAIR	INGEBORG	KNITTING CHAIR	MERKUR	MINGLE	MY OWN CHAIR	PASSAGE	READY	THE TIRED MAN	VILHELM	THE PENGUIN	ELIZABETH	THE SEAL
SIERRA, CAMO	●		●			●	●			●			○	●					
PRICE CATEGORY 1																			
DAKAR, NEVOTEX	●	●	●			●	●	○	○	●		○	○	●	○	○	●	●	●
ENVY, SØRENSEN LEATHER	○	○	○		○			○	○	○		○	○	○	○	○	○	○	○
ULTRA, SØRENSEN LEATHER	●	●	●			●	●	○	○	●		○	○	●	○	○	○	○	○
PRICE CATEGORY 2																			
DUNES, SØRENSEN LEATHER	●	●	●			●	○	○	○	●		○	○	●	○	○	●	●	●
NUANCE, SØRENSEN LEATHER	●	○	●			●	○	○	○	○		○	○	○	○	○	○	○	○
PRICE CATEGORY 3																			
SHEEPSKIN CURLY, SKANDILOCK				●				●			●	●			●	●			
SHEEPSKIN CURLY, NEVOTEX		●							○										

*Leather Category 0*

A corrected leather with a printed surface, Sierra features a uniform appearance that requires minimal maintenance. Ideal for high-traffic areas, the long-lasting material is manufactured without environmentally harmful substances like PCP and CFC. Compliant with the REACH declaration, it adheres to all standards and limits for chrome VI.

---

PRICE CATEGORY  
0

---

MANUFACTURER  
Camo

---

MATERIALS  
Corrected leather

---

THICKNESS  
0.9 – 1.1 mm

---

MATERIALS  
100 % Corrected Leather

---

LIGHTFASTNESS  
≥4 (ISO 1-8)

---

TEARING STRENGTH  
≥20 N

---

FLEXING RESISTANCE  
50.000 cycles

---

C&M (BS5852-0/1)  
Yes

---

CAL 117  
Yes

---

CRIB 5 (BS5852-5)  
No



1611 STONE



0441 ARMY



1058 OCEAN BLUE



1279 HAZE



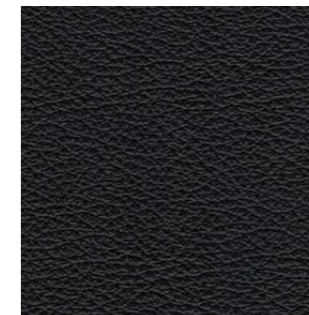
1053 TOFFEE



1513 KELATO WHISKY



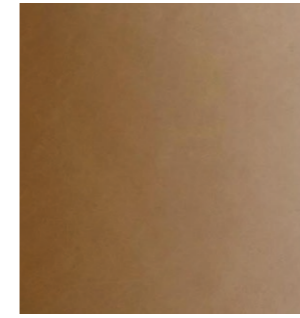
1015 DARK BROWN



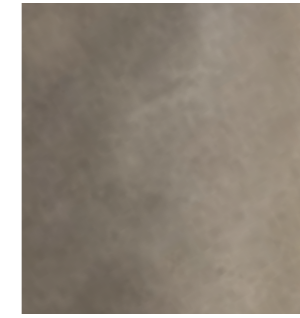
1001 BLACK

# *Leather Category 1*

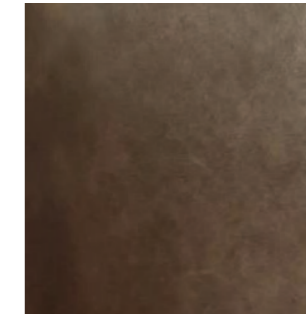
This chrome- and vacuum-tanned, full-grain aniline leather has a waxed surface for an exceptionally soft touch and a glossy finish that highlights its natural texture. Becoming more comfortable over time, it provides a supportive and cosy seating experience and develops a distinctive patina that adds character and uniqueness to each piece of furniture. Leather Standard by Oeko-Tex® certified.



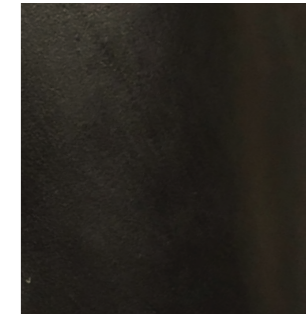
0250 COGNAC



0311 ANTILOP



0329 BROWN



0842 BLACK

---

PRICE CATEGORY  
1

---

MANUFACTURER  
Nevotex

---

MATERIALS  
100 % Aniline Leather

---

LIGHTFASTNESS  
3 (ISO 1-8)

---

TEARING STRENGTH  
≥20 N

---

FLEXING RESISTANCE  
30.000 cycles

---

CAL 117  
Yes

---

CRIB 5 (BS5852-5)  
No

ENVY  
by Sørensen Leather

Smooth to the touch and with a subtle surface sheen, Envy is an elegant aniline leather with subtle natural markings, artfully minimised through a special sanding process. The addition of a light, transparent wax further enhances surface protection, resulting in a delightful feel and a brilliant sense of depth. Leather Standard by Oeko-Tex® certified.



NOUGAT - 20322



OLIVE - 20324

---

PRICE CATEGORY  
1

---

MANUFACTURER  
Sørensen Leather

---

MATERIALS  
100 % Aniline Leather

---

LIGHTFASTNESS  
>3 (ISO 1-8)

---

TEARING STRENGTH  
≥20 N

---

FLEXING RESISTANCE  
Non applicable

---

C&M (BS5852-0/1)  
Yes

---

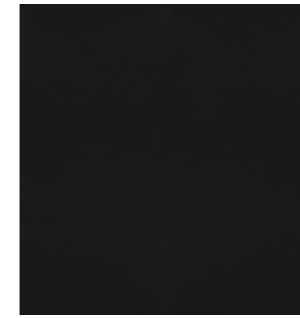
CAL 117  
Yes

---

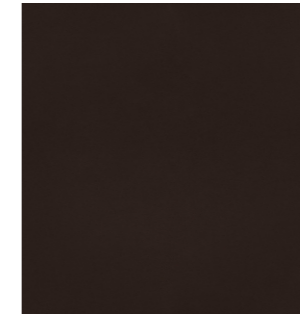
CRIB 5 (BS5852-5)  
No

ULTRA  
*by Sørensen Leather*

A versatile protected leather ideal for everyday use, Ultra has a buffed, embossed texture for a tactile feel. Its uniform grain pattern across the entire hide ensures a consistent look, and a protective finish ensures Ultra is easy to maintain and retains its original appearance for an extended period, resisting signs of aging or fading.



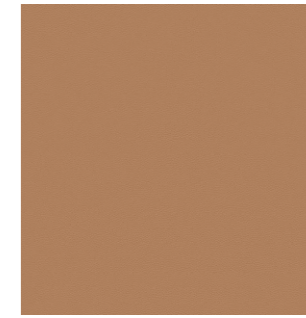
BLACK - 41599



CHOCOLATE - 41589



BRANDY - 41574



CAMEL - 41571

---

PRICE CATEGORY  
1

---

MANUFACTURER  
Sørensen Leather

---

THICKNESS  
0.9 – 1.1 mm

---

MATERIALS  
100% Protected Leather

---

LIGHTFASTNESS  
>5 (ISO 1-8)

---

TEARING STRENGTH  
≥20 N

---

FLEXING RESISTANCE  
50.000 cycles

---

CAL 117  
Yes

---

CRIB 5 (BS5852-5)  
No

## *Leather Category 2*



DUNES  
*by Sørensen Leather*

An exclusive aniline leather characterised by its natural, unrefined appearance, Dunes® achieves its luxurious velvety touch through sanding and a special leather oil application. Its matte finish exudes raw elegance, accentuated by unique natural markings that lend individuality to each hide. Patinating through usage and exposure to light, Dunes becomes shinier and smoother over time.



ANTHRAZITE - 21003



COGNAC - 21000

---

PRICE CATEGORY  
2

---

MANUFACTURER  
Sørensen Leather

---

THICKNESS  
1.1 – 1.3 mm

---

CERTIFICATE  
Nordic Swan Ecolabel

---

MATERIALS  
100% Aniline Leather

---

LIGHTFASTNESS  
3 (ISO 1-8)

---

TEARING STRENGTH  
≥20 N

---

FLEXING RESISTANCE  
20.000 cycles

---

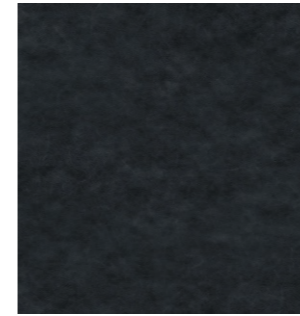
CAL 117  
Yes

---

CRIB 5 (BS5852-5)  
No - Cannot be treated

NUANCE  
by Sørensen Leather

Nuance boasts a remarkable depth and dimension that radiates authenticity while offering durability. With its sumptuous, tactile feel, the protected leather is nuanced in both texture and tone, retaining the natural patterns and imperfections inherent to each hide. An invisible coating preserves the softness and protects against wear and tear.



BURNED GREY - 40783



LIGHT GREY - 40782

---

PRICE CATEGORY  
2

---

MANUFACTURER  
Sørensen Leather

---

MATERIALS  
100% Protected Leather

---

THICKNESS  
1.1 – 1.3 mm

---

MATERIALS  
100% Aniline Leather

---

LIGHTFASTNESS  
>5 (ISO 1-8)

---

TEARING STRENGTH  
≥20 N

---

FLEXING RESISTANCE  
50.000 cycles

---

CAL 117  
Yes

---

CRIB 5 (BS5852-5)  
No

*Leather Category 3*

SHEEPSKIN  
*by Skandilock*



---

PRICE CATEGORY  
3

---

MANUFACTURER  
Skandilock

---

MATERIALS  
Sheepskin

---

THICKNESS  
17 mm



OFF WHITE



SAHARA



MOONLIGHT



HONEY



ESPRESSO



GREEN TEA

SHEEPSKIN  
*by Nevotex*



---

PRICE CATEGORY  
3

---

MANUFACTURER  
Nevotex

---

MATERIALS  
Sheepskin

---

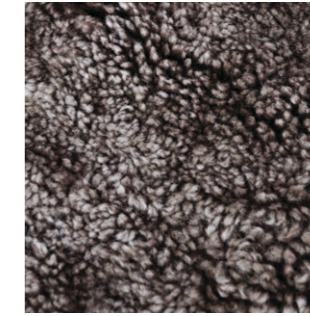
THICKNESS  
17 – 21mm



NATURE



SAHARA



ROOT

## NATURAL MARKINGS ON LEATHER

Individual and unique markings may appear on the leather and should not be considered as defects.



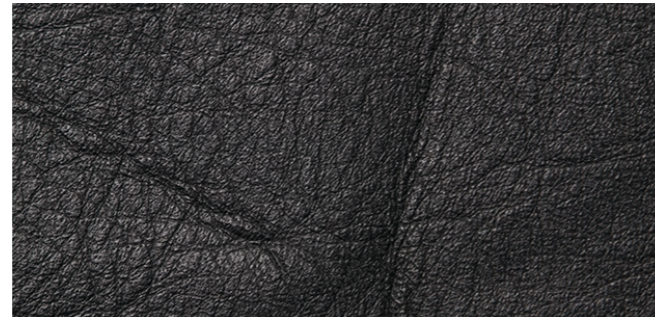
FAT WRINKLES



SCAR / INSECT BITES



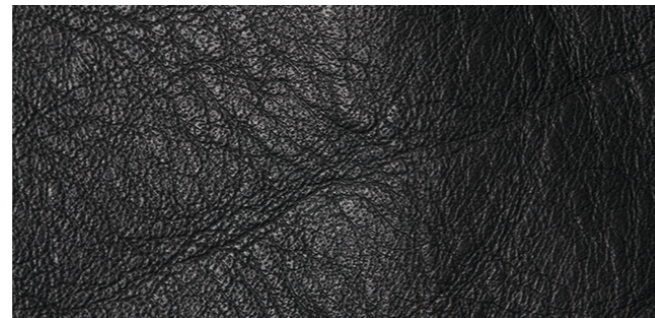
FOLDS



BUTCHING SCAR



HEALED SCARS



FAT WRINKLES

