

[product.]

ELECTRICITY / 1G DIMMER SWITCH

[motion. **ROTARY.**]

[look. **CROSS.**]

[detail. **COIN SCREW.**]

[born. **LONDON.**]

[region. **NORTH AMERICA.**]

A dimmer switch with a diamond-cut knurled knob to feel amazing with every touch. The dimmer is finished with a flat plate and our signature solid metal coin screws. Available in two different finishes. You can also team them up with our toggle switches, duplex and USB outlets in matching finishes.

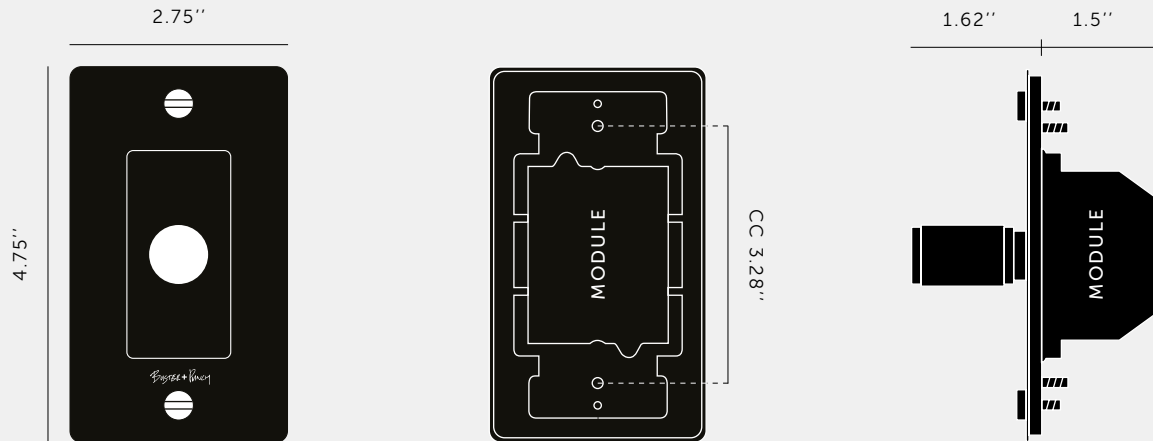


[finish. **BLACK.**]



[finish. **WHITE.**]

[info. **MEASUREMENTS.**]



[info. **SPECIFICATIONS.**]

Our Polycarbonate Electricity range plates are made of polycarbonate, painted black or white with a moulded Buster + Punch logo.

Module: NDM-01385 (BP-VR600US).

LED Dimmer Module

Style: Push ON/OFF Rotary Dimmer with 3 way switching

Input: 100 - 120V AC 60 HZ

Dimming Type: Leading Edge

Load: 600W max. HAL / INC - 150W max LED

Operating Temperature: 0° - 35°C / 32° - 89.6°F

Humidity: 10 - 90% R.H.

Certifications: cETLus 5008883

[info. **FINISH & SKU NUMBERS.**]

[finish.]

[US.]

White

NDR-14393

Black

NDR-02392

[info. **CARE INSTRUCTIONS.**]

Wipe with damp cloth with no loose hairs, avoid using any chemicals. All finishes are prone to aging.

[info. **CERTIFICATION.**]

Plates: Underwriters Laboratories listed for use throughout North America.

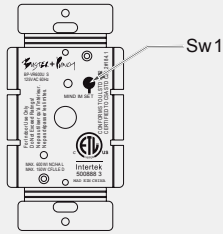
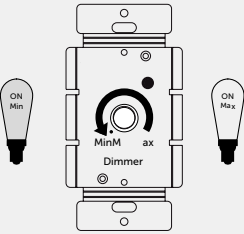
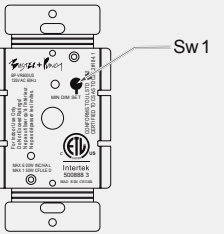
Dimmer: Intertek cETLus listed number for use throughout North America.


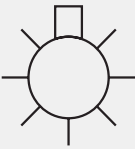
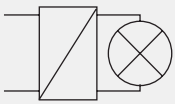
[please. **NOTE.**]

DISCLAIMER: Always consult a trade professional when installing this dimmer switch. Buster + Punch is not responsible for the usage or feasibility of installation requirements. This product is not suitable for damp or wet environments.

[tech spec.

FAQ SHEET

MINIMUM BRIGHTNESS LEVEL SETTING		
1 	2 	3 
Turn ON the lamp, then push Sw1 once. Lamp will appear half as bright.	Turn central knob to set desire minimum brightness level.	To save your setting Push Sw1 once. Lamp will appear at min brightness level then return to normal bright level.
EACH STEP SHOULD BE PREFORMED WITHIN 15 SECONDS, IF NOT, IT WILL TIME OUT AND AUTO EXIT THE PROGRAMME WITHOUT SAVING.		

COMPATIBLE LOADS	
<p>MAX 150W</p> <p>LED Dimmable</p> 	Dimmable LED lighting with compatible electronic transformers
<p>MAX 600W</p> 	Incandescent lighting, MV halogen lamps
	LV Halogen lighting with electronic transformers

FAQ SHEET

CATEGORY	QUESTION	ANSWER
GENERAL	How do I clean my electricity collection?	A slightly damp microfiber cloth is best, never use any chemicals as this will damaged the metal surface.
DIMMER	Are your dimmer modules 3-way?	Yes our dimmer modules are 3-way but if your need a 4-way solution you will need an intermediate dummy dimmer.
DIMMER	Do you stock 1-10 V dimming modules?	No unfortunatley we are not at the moment, but this will be available soon.
DIMMER	Who do you specify for your dimming modules?	We have our own brand of premium dimmer modules.
DIMMER	My dimmer seems to keep on rotating and won't stop?	You have a faulty dimmer we will replace this for you. Please contact Buster + Punch for any faulty product. Please supply photos or videos.
DIMMER	My lights are flickering or flashing?	One of the following can cause this problem: <ul style="list-style-type: none"> You are below the minimum wattage. You are above the maximum wattage. You are running LED's and incandescent lights on the same circuit. You bulbs are not compatible with our dimming modules.
DIMMER	My plate / light switch seems to get very hot?	This is not good, please turn off the power and contact an electrician immediately. Most likely they are overloading the dimming module by going over the maximum wattage.
DIMMER	I am struggling to install my dimmer, can you please help / advise?	No, we strongly recommend you contact a certified electrician to install our products for you.
DIMMER	Are your modules tested for use throughout North America?	Yes, our dimmer module is certified for use throughout North America. Module cETLus listed number: 5008883. Conforms to UL STD 1472 Certified to CSA STD C22.2#184.1. All modules are marked with the listed number. Plate cULus listed number: E507051.

FAQ SHEET

	PREMIUM MODULE (INCLUDED)
DIMMER TYPE	3-way
SUPPLY VOLTAGE & FREQUENCY	100-120V ~ 60HZ
MINIMUM & MAXIMUM LOAD	Dimmable LED Lamp: 5W-250W Main Voltage Halogen Lamps: 10W-600W And incandescent lighting were still in use. Dimmable LV Halogen Transformer: 10-600W
SPECIAL FEATURES	Soft start and soft power down. Dim set controlled by push switch. Can be wired both single pole and 3-way.
GU10 OR SIMILAR MAINS HALOGEN BULBS	10W-600W
DIMMABLE ELECTRONIC TRANSFORMERS	Works to these parameters: Dimmable LV halogen transformer: 10-600W Is compatible with: integral dimmable LED lamps dimmable LED lighting with compatible electronic transformers incandescent lighting, MV halogen lamps LV halogen lighting with electronic transformers. The dimmer is NOT suitable for "MLV".
OPERATING TEMPERATURE	0° - 35°C / 32° - 89.6°F
OPERATING HUMIDITY	10 - 90% R.H.
OTHER DIMMABLE COMPACT FLUORESCENT BULBS	Please refer to guidance from bulb manufacturer.
DIMMABLE LED LIGHTING	Yes, works between: 5W-150W
NON-DIMMABLE FLUORESCENT LIGHTING, ENERGY SAVING BULBS	Not compatible