

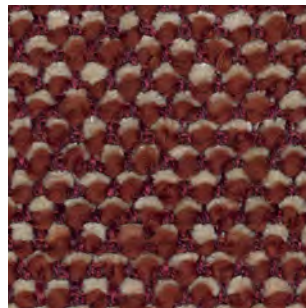
006



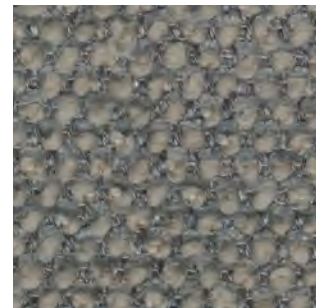
014



005



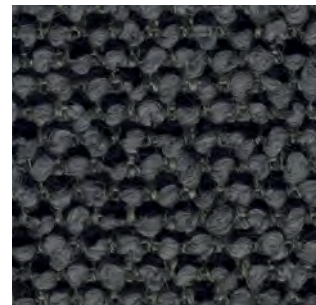
013



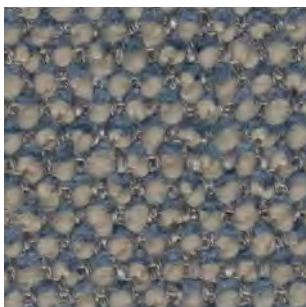
008



011



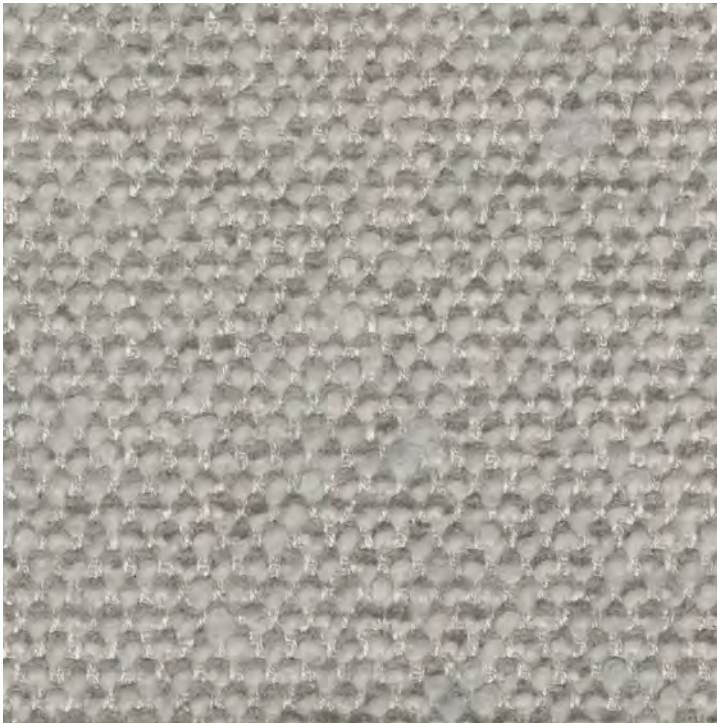
009



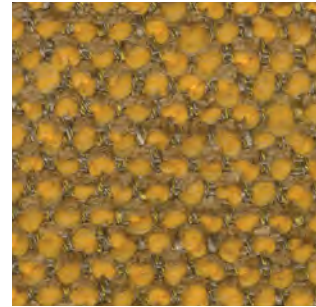
012



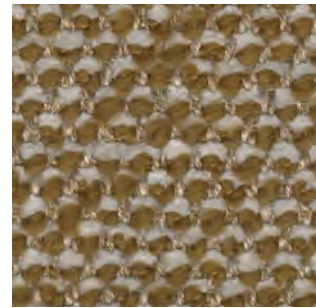
010



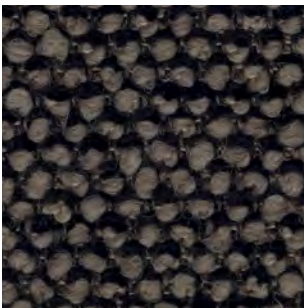
007



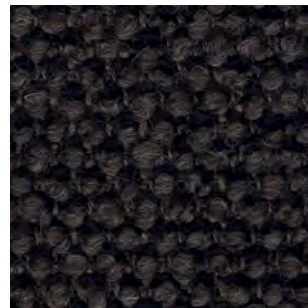
017



016



003



002



004



001



015

Safire

DK

Anvendelse Polstring

Beskrivelse 43% viscose, 17% polyacryl, 15% uld, 9% bomuld, 8% hør, 8% polyester.

Bredde 140 cm / 55 in. Vægt 1.010 g/lbm

Testning Lysægted 6 (ISO 1-8). Pilling 3 (ISO 1-5). Slidstyrke: 40.000 Martindale.

Krympning ca. 2%. Flammesikring

BS 5852 Crib 5 med behandling. BS 5852 part 1.

EN 1021-1/2

Vedligeholdelse Se ISO symboler

UK/US

Application Upholstery

Description 43% Viscose, 17% Acrylic, 15% New Wool, 9% Cotton, 8% Linen, 8% Polyester. Width 140 cm / 55 in.

Weight 1010 g/lm 36 oz/sq

Tests Lightfastness 6 (ISO 1-8). Pilling 3 (ISO 1-5). Durability 40.000 Martindale.

Shrinkage ca. 2%. Flame resistance

BS 5852 Crib 5 with treatment. BS 5852 part 1.

EN 1021-1/2

Care Please see the ISO symbols

DE

Anwendungsbereich Bezugsstoff

Beschreibung 43% Viskose, 17% Acryl, 15% Wolle, 9% Baumwolle, 8% Leinen, 8% Polyester. Breite 140 cm / 55 in.

Gewicht 1.010 g/lfd. Meter

Testergebnisse Lichtechtheit 6 (ISO 1-8).

Pilling 3 (ISO 1-5). Scheuertouren 40.000

Martindale. Einlaufquote ca. 2%.

Flammschutz BS 5852 Crib 5 mit Behandlung.

BS 5852 part 1. EN 1021-1/2

Pflege Siehe ISO Pflegesymbole

NL

Toepassing Bekleding stof

Omschrijving 43% viscose, 17% acryl, 15% wol, 9% katoen, 8% linnen, 8% polyester.

Hoogte 140 cm / 55 in. Gewicht 1.010 gr/str.m

Testgegevens Lichtechtheid 6 (ISO 1-8). Pilling 3 (ISO 1-5). Durability 40.000 Martindale.

Washbelading ca. 2%. Vlamvertragendheid

BS 5852 Crib 5 met behandeling. BS 5852 part 1.

EN 1021-1/2 **Onderhoud** Zie de ISO symbolen

FR

Domaine d'utilisation Tissu d'ameublement

Description 43% viscose, 17% acrylique, 15% laine, 9% coton, 8% lin, 8% polyester.

Largeur 140 cm / 55 in. Poids 1.010 g/ml

Tests Résistance à la lumière 6 (ISO 1-8).

Résistance au frottement 3 (ISO 1-5).

Résistance à l'abrasion 40.000 Martindale.

Rétrécissement env. 2%. Normes au feu

BS 5852 Crib 5 avec traitement. BS 5852 part 1.

EN 1021-1/2

Entretien Voir les symboles ISO

IT

Destinazione d'uso Tessuti per tappezzeria

Caratteristiche 43% viscosa, 17% acrilico, 15% lana, 9% cotone, 8% lino, 8% poliestere.

Larghezza 140 cm / 55 in. Peso 1.010 gr/ml

Test Resistenza alla luce 6 (ISO 1-8). Pilling 3 (ISO 1-5). Abrasione 40.000 Martindale.

Restringimento circa 2%. Ignifugazione

BS 5852 Crib 5 con il trattamento. BS 5852 part 1.

EN 1021-1/2

Manutenzione Per favore seguire simboli ISO

ES

Aplicación Tapicería

Descripción 43% viscosa, 17% poliacrílica, 15% lana, 9% algodón, 8% lino, 8% poliéster.

Anchura 140 cm / 55 in. Peso 1.010 gr/ml

Pruebas Resistencia a la luz 6 (ISO 1-8).

Relleno 3 (ISO 1-5). Resistencia al desgaste

40.000 Martindale. Encogimiento aprox. 2%.

Resistencia al fuego BS 5852 Crib 5 con

tratamiento. BS 5852 part 1. EN 1021-1/2

Mantenimiento Consulte los símbolos ISO

JP

用途 室内装飾用テキスタイル

組成 ビスコース 43%, アクリル 17%,

ニューウール 15%, 綿 9%, 麻 8%,

ポリエステル 8%. 幅 140 cm / 55 インチ. 重さ

1,010 g/lin.m

テスト 耐光性 6 (ISO 1-8). ピリング 3 (ISO 1-5).

耐久性 マーチンデール値 - 40,000. 収縮 約 2%

ケア 詳細は、ISO認証をご覧ください

CN

应用 软装面料

成分 43%粘胶纤维, 17%腈纶, 15%羊毛, 9%棉,

8%亚麻, 8%涤纶. 幅宽 140 cm / 55 in. 克重

1,010 g/lin.m

耐磨指数 耐光性 6 (ISO 1-8). 抗起球度

3 (ISO 1-5). 耐久度 40,000 次马丁代尔摩擦实验

(Martindale). 缩水率 大约2%

维护 请参阅ISO符号



Contact and further information www.sahco.com

Quality and environmental system accreditation according to ISO 9001 and ISO 14001

Encouraging the use of suitable fibres. Durable and high quality. Hazardous substances restricted.