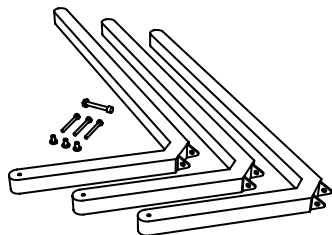


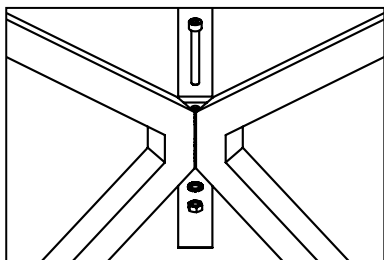
FRISBEE DINING TABLE Ø120

Assembly guide



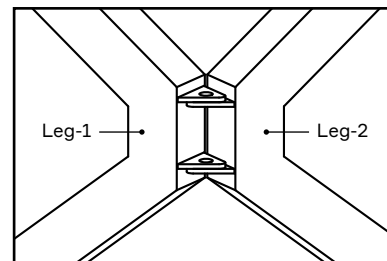
STEP 1

Parts to assemble leg base: 3 steel legs, 1 large screw + washer & nut.
Parts to assemble leg base to table top: 3 small screws + 3 nuts.



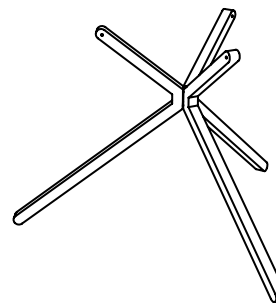
STEP 3

Press the large M8 bolt through all six holes in legs. Screw on the washer and nut. Tighten the nut loosely. Do not tighten the nut fully before legs are mounted fully to the table top.



STEP 2

Hold together the three legs. The triangular flanges are mounted in different heights on each leg.
Leg-1 fits on the top. Leg-2 fits in the middle. Leg-3 fits on the bottom.

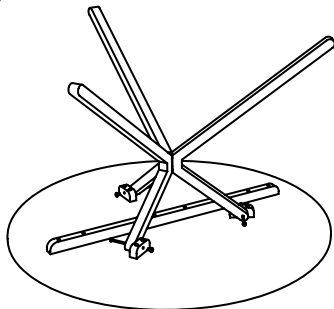


STEP 4

The assembled leg base should now look like this.

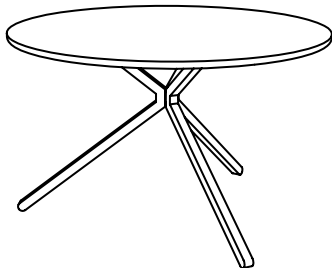
FRISBEE DINING TABLE Ø120

Assembly guide



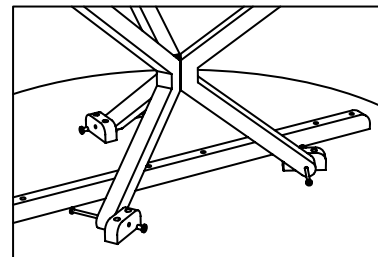
STEP 5

Lay the tabletop on the floor (on a carpet or something soft). Put on the leg-base so it fits with the brackets. Mount the leg base to the tabletop using the three smaller screws and nuts.



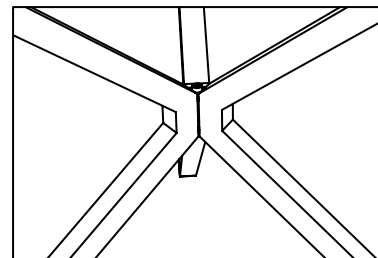
STEP 7

Turn around the table.



STEP 6

Fully tighten with hex keys.



STEP 8

Now, fully tighten the screw connecting the legs. The table is now ready for use.