

015



017



018



014



020



019



010



022



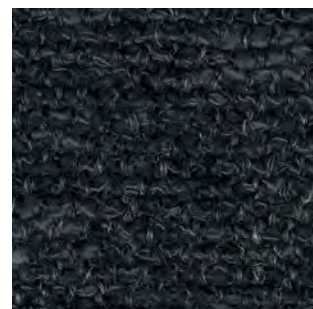
021



009



004



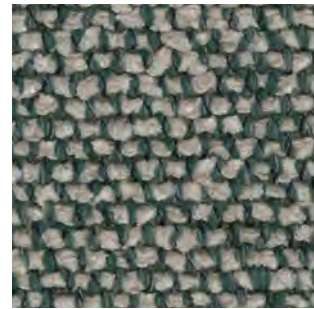
008



001



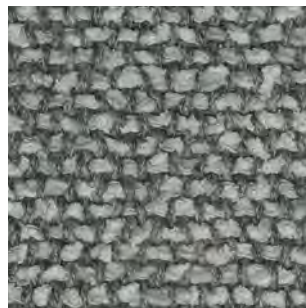
002



003



005



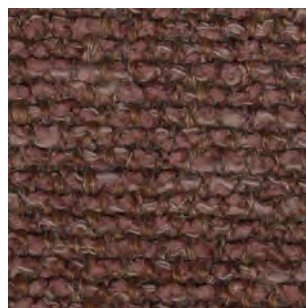
006



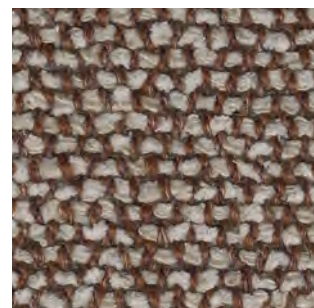
007



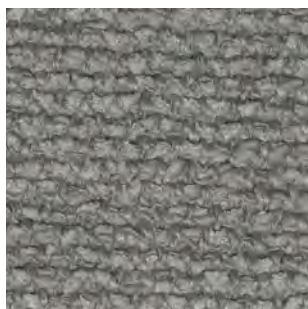
011



012



013



016

Moss Vincent Van Duysen

DK

Anvendelse Polstring

Beskrivelse 52% bomuld, 22% viscose, 14% acryl, 6% hør, 3% polyamid, 3% polyester.

Bredde 138 cm / 54 in. Vægt 920 g/lbm

Testning Lysægted 5-7 (ISO 1-8). Pilling 4-5 (ISO 1-5). Slidstyrke: 50.000 Martindale.

Krympning ca. 2%. Flammesikring BS 5852

Crib 5 med behandling. BS 5852 part 1.

EN 1021-1/2

Vedligeholdelse Se ISO symboler

UK/US

Application Upholstery

Description 52% Cotton, 22% Viscose,

14% Acrylic, 6% Linen, 3% Nylon, 3% Polyester.

Width 138 cm / 54 in. Weight 920 g/lm 32 oz/sq

Tests Lightfastness 5-7 (ISO 1-8). Pilling 4-5

(ISO 1-5). Durability 50.000 Martindale.

Shrinkage ca. 2%. Flame resistance BS 5852

Crib 5 with treatment. BS 5852 part 1.

EN 1021-1/2

Care Please see the ISO symbols

DE

Anwendungsbereich Bezugsstoff

Beschreibung 52% Baumwolle, 22% Viskose,

14% Acryl, 6% Leinen, 3% Nylon, 3% Polyester.

Breite 138 cm / 54 in. Gewicht 920 g/lfd. Meter

Testergebnisse Lichtechtheit 5-7 (ISO 1-8).

Pilling 4-5 (ISO 1-5). Scheuertouren 50.000

Martindale. Einlaufquote ca. 2%. Flammenschutz

BS 5852 Crib 5 mit Behandlung. BS 5852 part 1.

EN 1021-1/2

Pflege Siehe ISO Pflegesymbole

NL

Toepassing Bekleding stof

Omschrijving 52% katoen, 22% viscose, 14% acryl, 6% linnen, 3% polyamide, 3% polyester.

Hoogte 138 cm / 54 in. Gewicht 920 gr/str.m

Testgegevens Lichtechtheid 5-7 (ISO 1-8).

Pilling 4-5 (ISO 1-5). Durability 50.000

Martindale. Washbelading ca. 2%.

Vlamvertragendheid BS 5852 Crib 5 met

behandeling. BS 5852 part 1. EN 1021-1/2

Onderhoud Zie de ISO symbolen

FR

Domaine d'utilisation Tissu d'ameublement

Description 52% coton, 22% viscose,

14% polyacrylique, 6% lin, 3% polyamide,

3% polyester. Largeur 138 cm / 54 in.

Poids 920 g/ml

Tests Résistance à la lumière 5-7 (ISO 1-8).

Résistance au frottement 4-5 (ISO 1-5).

Résistance à l'abrasion 50.000 Martindale.

Rétrécissement env. 2%. Normes au feu

BS 5852 Crib 5 avec traitement. BS 5852 part 1.

EN 1021-1/2

Entretien Voir les symboles ISO

IT

Destinazione d'uso Tessuti per tappezzeria

Caratteristiche 52% cotone, 22% viscosa,

14% acrilico, 6% lino, 3% polyamide,

3% poliestere. Larghezza 138 cm / 54 in.

Peso 920 gr/ml

Test Resistenza alla luce 5-7 (ISO 1-8). Pilling

4-5 (ISO 1-5). Abrasione 50.000 Martindale.

Restringimento circa 2%. Ignifugazione BS 5852

Crib 5 con il trattamento. BS 5852 part 1.

EN 1021-1/2

Manutenzione Per favore seguire simboli ISO

ES

Aplicación Tapicería

Descripción 52% algodón, 22% viscosa, 14% poliácridica, 6% lino, 3% poliamida,

3% poliéster. Anchura 138 cm / 54 in.

Peso 920 gr/ml

Pruebas Resistencia a la luz 5-7 (ISO 1-8).

Relleño 4-5 (ISO 1-5). Resistencia al desgaste

50.000 Martindale. Encogimiento aprox. 2%.

Resistencia al fuego BS 5852 Crib 5 con

tratamiento. BS 5852 part 1. EN 1021-1/2

Mantenimiento Consulte los símbolos ISO

JP

用途 室内装飾用テキスタイル、

組成 綿 52%、ビスコース 22%、アクリル 14%、

麻 6%、ナイロン 3%、ポリエステル 3%。

幅 138 cm / 54 インチ。重さ 920 g/lin.m

テスト 耐光性 5-7 (ISO 1-8)。ピリング

4-5 (ISO 1-5)。耐久性 マーチンデル値 -

50,000。収縮 約 2%。難燃性 BS 5852 part 1,

EN 1021-1/2

ケア 詳細は、ISO 認証をご覧ください

CN

应用 软装面料

成分 52%棉, 22%粘胶纤维, 14%腈纶, 6%亚麻,

3%锦纶, 3%涤纶。幅宽 138 cm / 54 in. 克重

920 g/lin.m

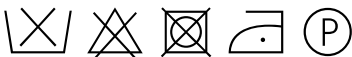
耐磨指数 耐光性 5-7 (ISO 1-8)。抗起球度

4-5 (ISO 1-5)。耐久度 50,000 次马丁代尔摩擦实验

(Martindale)。缩水率 大约 2%。阻燃 BS 5852

part 1, EN 1021-1/2

维护 请参阅ISO符号



Contact and further information www.sahco.com

Quality and environmental system accreditation according to ISO 9001 and ISO 14001

Encouraging the use of suitable fibres. Durable and high quality. Hazardous substances restricted.